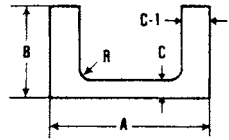


# EVERETT STEEL COMPANIES

## 6061-T6 ALUMINUM STRUCTURAL CHANNELS

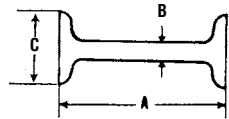
Aluminum Association (AA) -  
25 Ft. Lengths



Size (Inches) <b>A</b>	Web Thick <b>C</b>	Flange Width <b>B</b>	Flange Thick <b>C-1</b>	Radius <b>R</b>	Wt. per Lin. Ft.	Wt. Per Length
<b>2</b>	.13	1.00	.13	.10	.577	14.43
	.17	1.25	.26	.15	1.071	26.78
<b>3</b>	.13	1.50	.20	.25	1.135	28.38
	.17	1.75	.26	.25	1.597	39.93
<b>4</b>	.15	2.00	.23	.25	1.738	43.45
	.19	2.25	.29	.25	2.331	58.28
<b>5</b>	.15	2.25	.26	.30	2.212	55.30
	.19	2.75	.32	.30	3.089	77.23
<b>6</b>	.17	2.50	.29	.30	2.834	70.85
	.21	3.25	.35	.30	4.030	100.75
<b>7</b>	.17	2.75	.29	.30	3.205	80.13
	.21	3.50	.38	.30	4.715	117.88
<b>8</b>	.19	3.00	.35	.30	4.147	103.68
	.25	3.75	.41	.35	5.789	144.73
<b>10</b>	.25	3.50	.41	.35	6.136	153.40

## 6061-T6 ALUMINUM STRUCTURAL I BEAM

American Standard - 25 Ft. Length

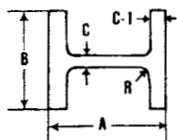


Size (Inches) <b>A</b>	Web Thick <b>B</b>	Flange Approx. Width <b>C</b>	Approx. Wt. per Lin. Ft.	Wt. per Length
<b>3</b>	.170	2.330	2.148	53.70
	.349	2.509	2.591	64.78
<b>4</b>	.190	2.660	2.644	66.10
	.326	2.796	3.292	82.30
<b>5</b>	.210	3.000	3.678	85.75
	.494	3.284	5.104	127.50
<b>6</b>	.230	3.330	4.312	107.80
	.270	4.000	6.348	158.70

# EVERETT STEEL COMPANIES

## 6061-T6 ALUMINUM STRUCTURAL I BEAM

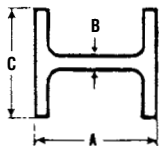
Aluminum Association (AA) -  
25 Ft. Lengths



Size (Inches) <b>A</b>	Web Thick <b>C</b>	Flange Width <b>B</b>	Flange Thick <b>C-1</b>	Radius <b>R</b>	Wt. per Lin. Ft.	Wt. per Length
<b>4</b>	.15	3.00	.23	.25	2.357	58.93
	.17	3.00	.29	.25	2.850	71.25
<b>5</b>	.19	3.50	.32	.30	3.700	92.50
<b>6</b>	.19	4.00	.29	.30	4.112	102.80
	.21	4.00	.35	.30	4.693	117.33
<b>8</b>	.23	5.00	.35	.30	6.181	154.53

## 6061-T6 ALUMINUM STRUCTURAL WIDE FLANGE BEAMS

Aluminum Association (AA) -  
25 Ft. Length



Size (Inches) <b>A</b>	Web Thick <b>B</b>	Flange Width <b>C</b>	Wt. per Lin. Ft.	Wt. per Length
<b>6</b>	.230	4.000	4.160	104.0
	.240	6.000	5.400	135.0
<b>8</b>	.230	5.250	5.900	147.5
	.245	6.500	8.320	208.0
	.288	8.000	10.725	268.1